

Soot Accumulation in Diesel Particulate Filters Using ULSD and B20 Biodiesel Fuel Blends

Paul Charbonneau and James S. Wallace
Department of Mechanical
& Industrial Engineering
University of Toronto

October 8, 2009



1



Biodiesel Generated Particulate Matter

- Less PM by mass
- Different Composition
 - ⌘ Higher Organic Carbon Fraction
 - ⌘ Higher Oxygen Content
- Different Size Distribution
- Amorphous – irregular microstructure

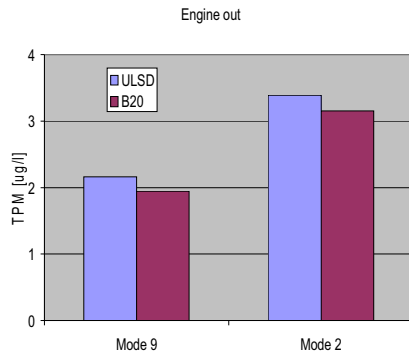


2



Total Particulate Matter (TPM)

- Engine Out TPM decreases by 7-10% with B20 over ULSD.



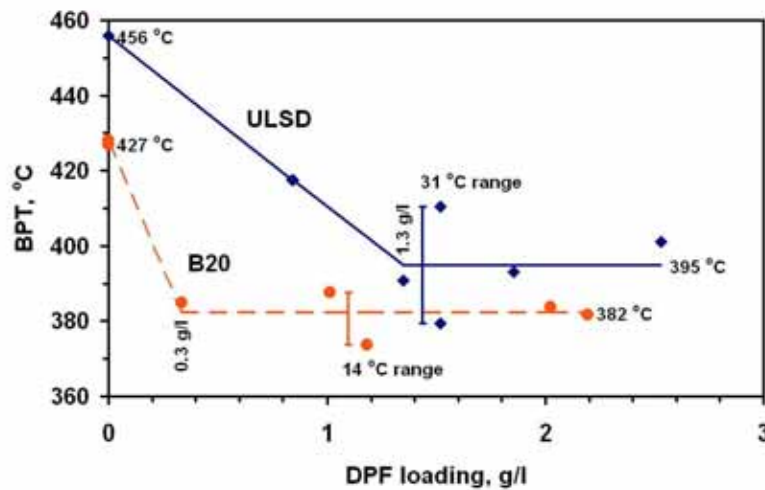
- All DPFs removed >99% of TPM by mass.
- No significant difference between fuels at DPF outlet.



3



Balance Point Temperature Results



4



DPFs and Biodiesel Emissions

Lower Balance Point Temperature
Attributed to:

- ⌘ More Reactive Chemical Composition
- ⌘ More Reactive Amorphous Microstructure



5



Synopsis

- Studied emissions from the use of ULSD and B20 fuels
- Loaded DPFs for discrete times of 1, 2, 5 and 10 hours on an off-road heavy duty diesel engine
- Recorded pressure drop across filters and mass gained by filters
- Dissected filters and sampled channel walls
- Analyzed soot on channel walls at different stages of loading using Scanning Electron Microscopy



6



Apparatus & Experimental Procedure

Engine and Fuels
DPF Specifications
Experimental Setup
Test Matrix
Filter Dissection and Sampling
Procedure



7



Engine and Fuels

Engine:

- ❑ 3.9l four-cylinder turbocharged DI diesel engine – Tier 1 off-road specification

Fuels:

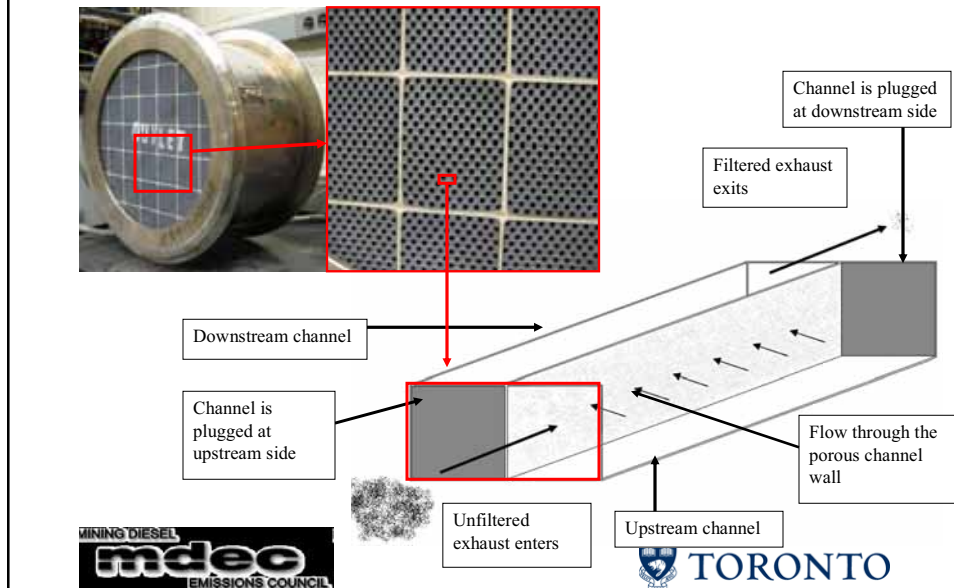
- ❑ ULSD – 2007 certification fuel
- ❑ B20 blend – 20% soy-based biodiesel in ULSD



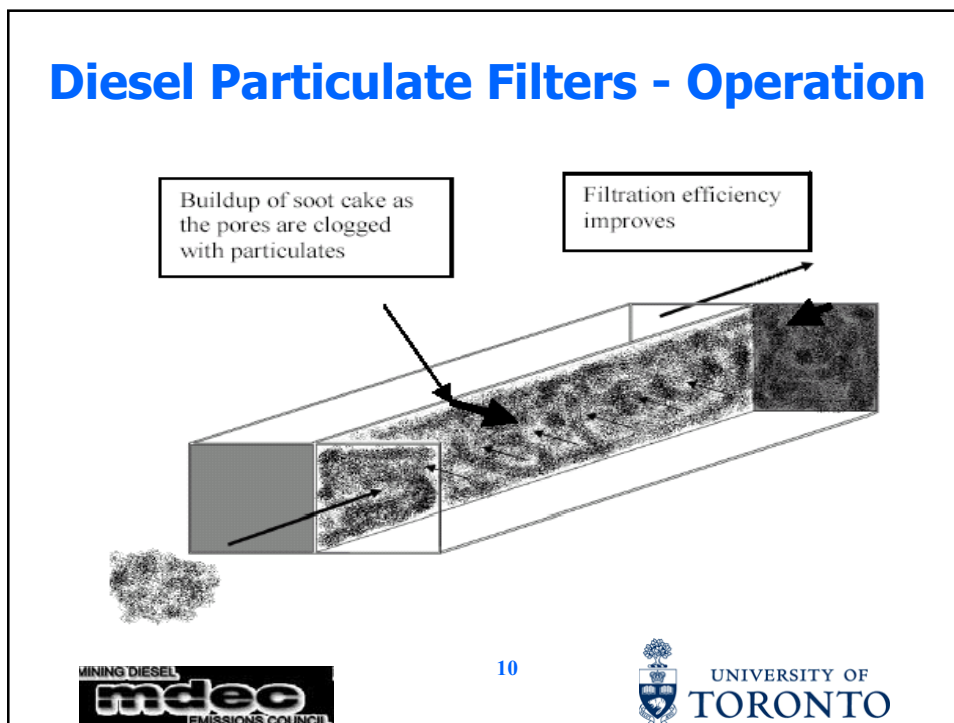
8



Diesel Particulate Filters: Operation



Diesel Particulate Filters - Operation



DPF Specifications

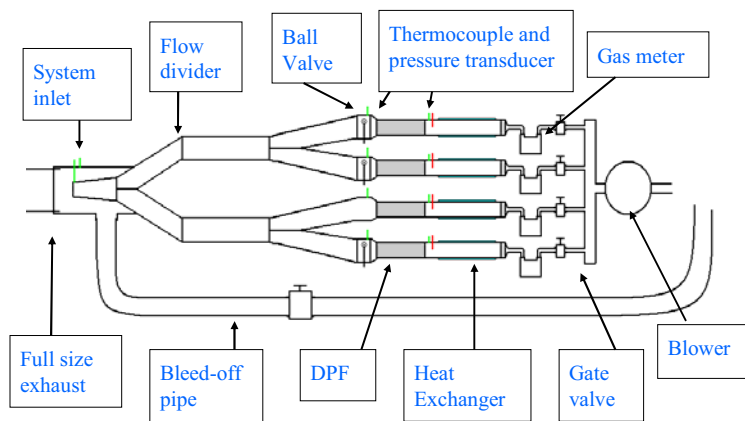
Material	Uncatalyzed Silicon Carbide (SiC)
Diameter	80mm
Length	130mm
Channel Density	150 cells/in ²
Channel Size	1.6 x 1.6 mm
Channel Wall Thickness	0.5mm



11



Experimental Setup



12

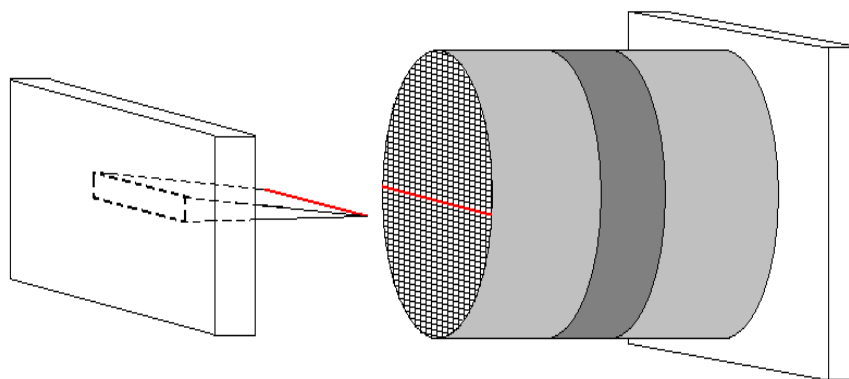


Test Matrix

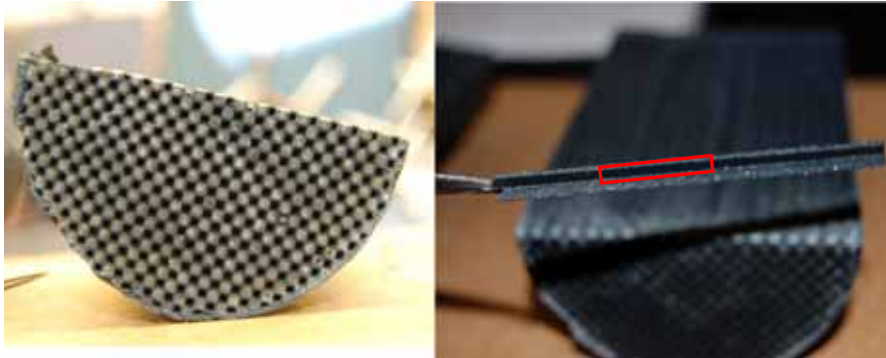
Loading Time (hrs)	ULSD	B20 Blend
0.5	x1	x0
1	x2	x3
2	x3	x3
5	x3	X3
10	x3	X3
<i>FMPS</i>	x3	X3

ISO Mode 9 used for loading
Uncatalyzed SiC Filters

Post-Trial Filter Dissection



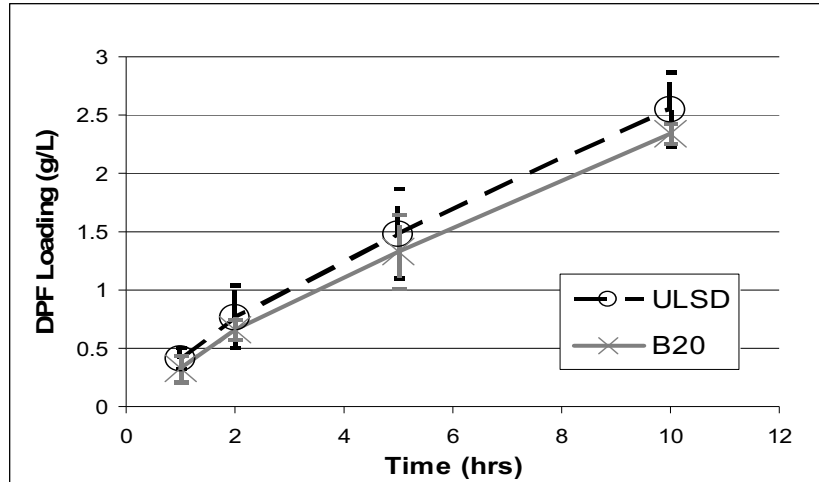
Filter Dissection and Channel Wall Sampling



Analysis and Results

- Trial Data
 - ⋈ Mass Accumulation
 - ⋈ Pressure Drop Across Filters
- Post-Trial Analysis
 - Scanning Electron Microscopy

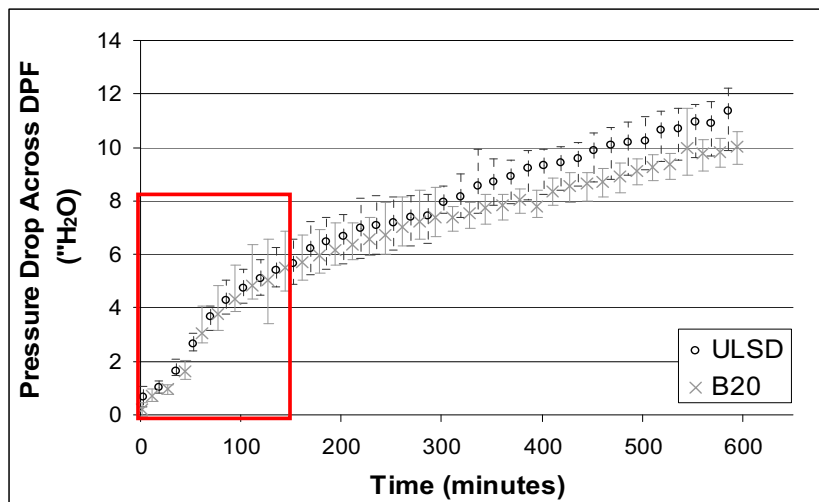
Fuel Effect on Trial Data: Mass Accumulation



17



General Loading Trends from Trial Data: Pressure Drop Across Filters

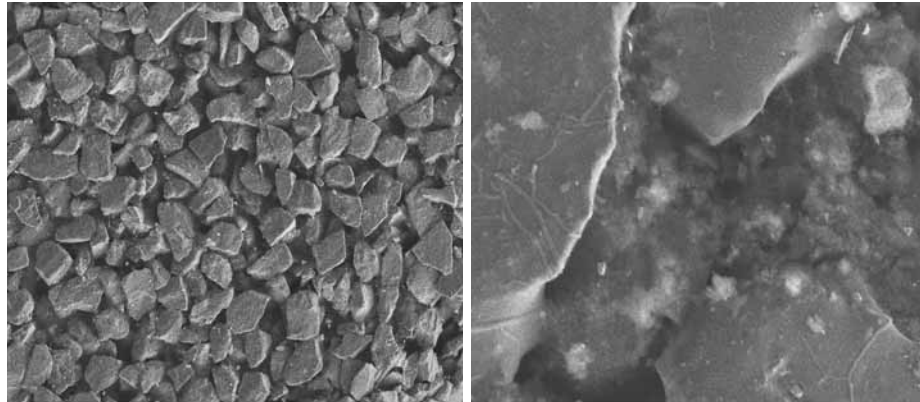


18



General Loading Trends from Scanning Electron Microscopy

2 Hour Loading

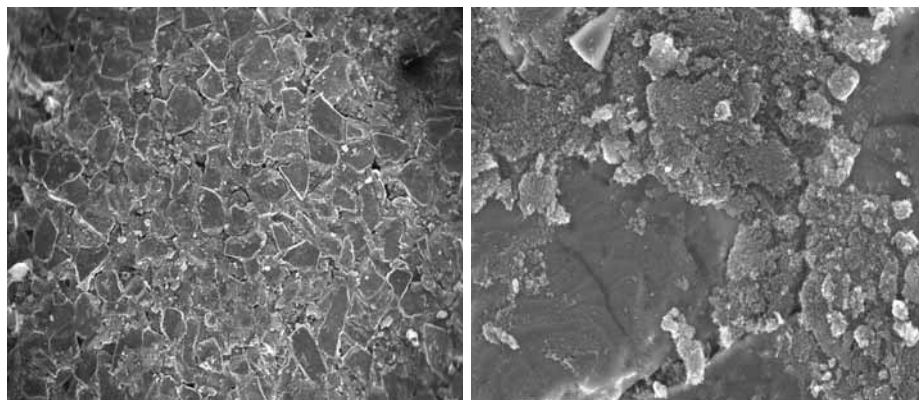


19



General Loading Trends from Scanning Electron Microscopy

5 Hour Loading

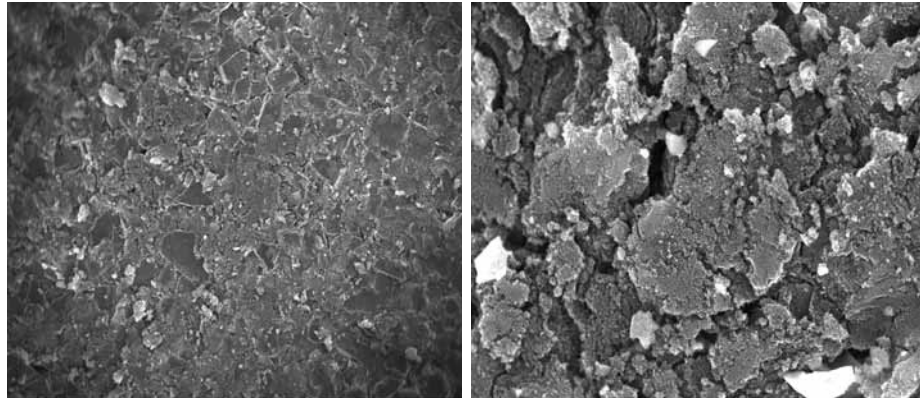


20



General Loading Trends from Scanning Electron Microscopy

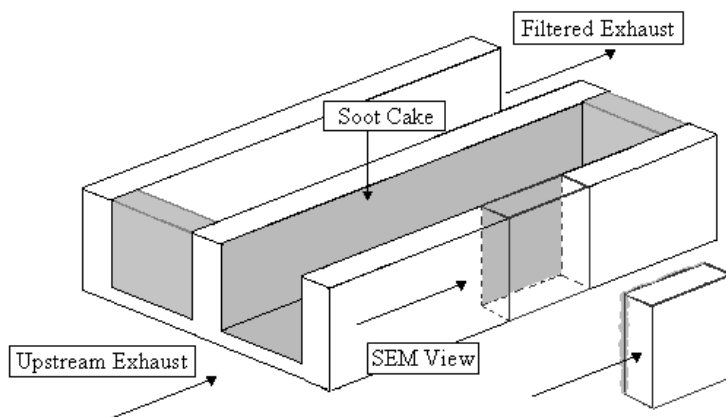
10 Hour Loading



21



General Loading Trends from Cross Sectional SEM Images



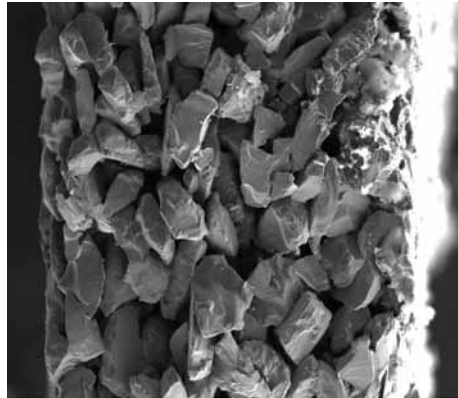
22



General Loading Trends from Cross Sectional SEM Images

10 Hour Loading – B20

10 Hour Loading – ULSD



300µm

100µm



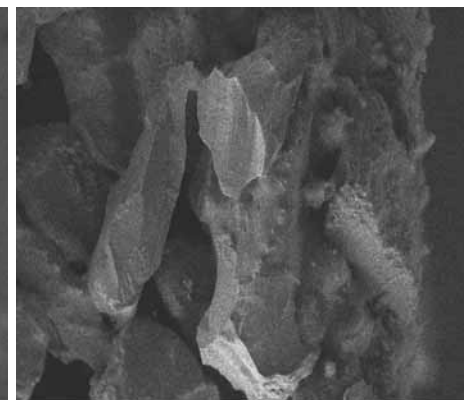
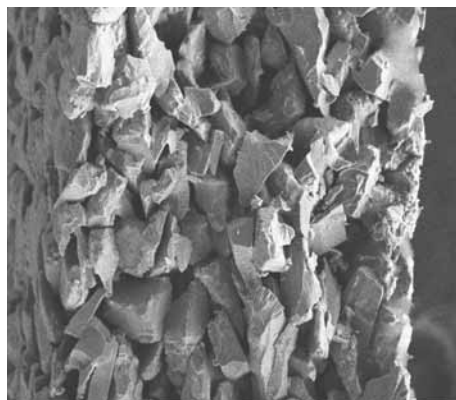
23



General Loading Trends from Cross Sectional SEM Images

2 Hour Loading – B20

10 Hour Loading – ULSD



300µm

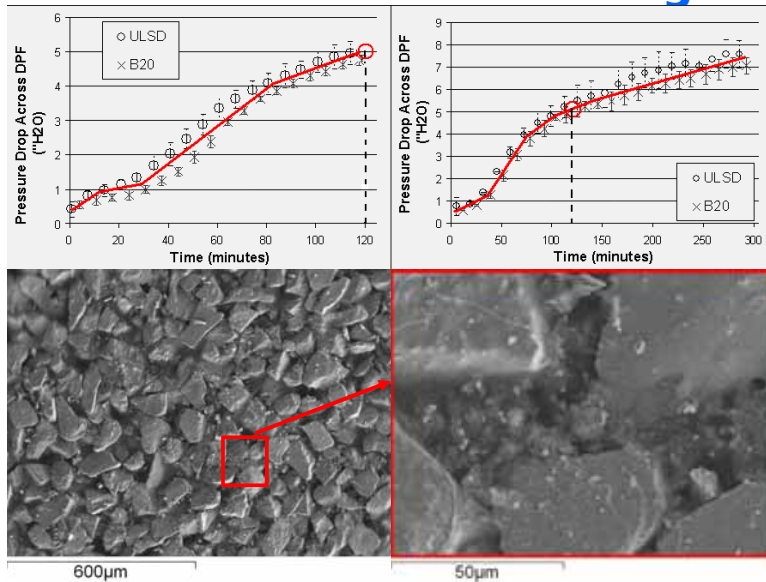
100µm



24



Discussion of General Loading Trends

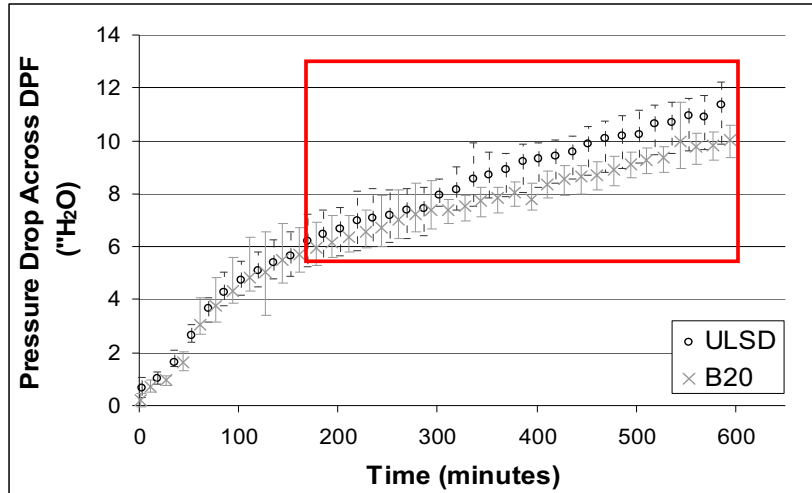


Discussion of General Loading Trends

Increasing Particulate Loading Showed:

- ⇒ The initial non-linear portion of the pressure drop curve to be the result of the formation of a pore-bridge, clogging wall pores
- ⇒ The pore-bridge to be a shallow feature limited to the first $\frac{1}{4}$ of the depth of the channel wall
- ⇒ The growth of the soot cake is associated with the linear portion of the pressure drop curve

Fuel Effect on Trial Data: Pressure Drop Across Filters



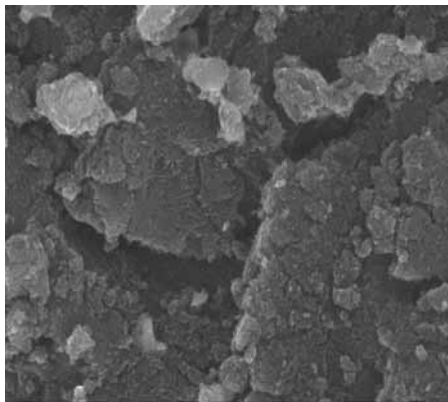
27



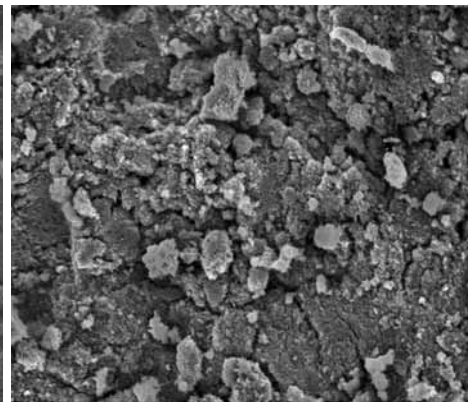
Fuel Effect on SEM Images: Soot Cake Features

10 Hour Loading – ULSD

10 Hour Loading – B20



50µm

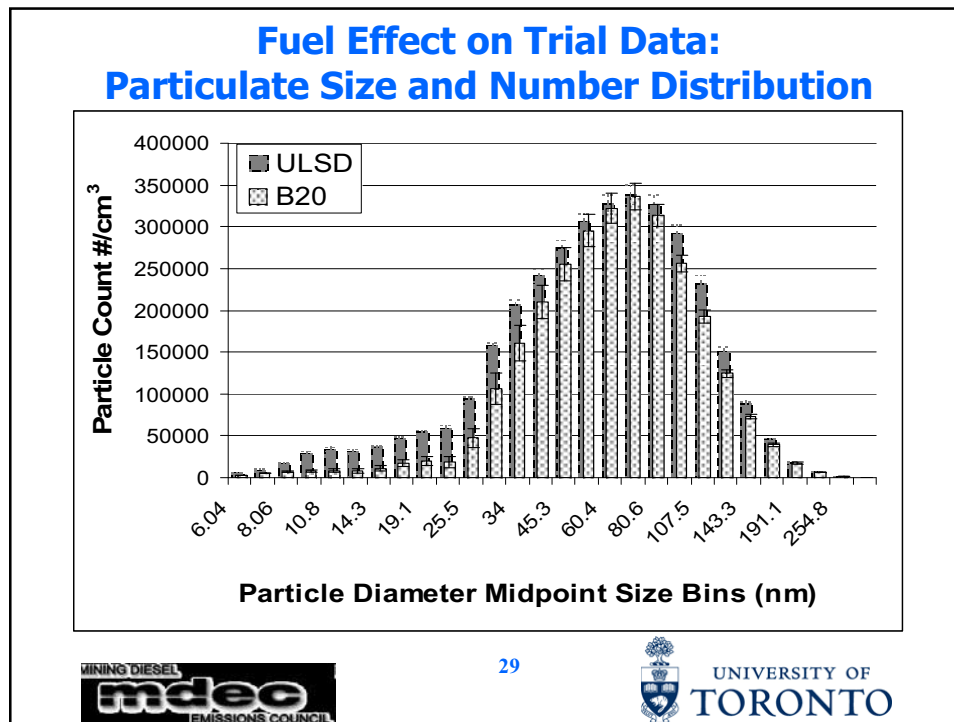


50µm



28





Discussion of Fuel Effect on DPF Loading

Use of B20 led to:

- ⌘ A particle size distribution with fewer nanoparticles (engine out)
- ⌘ Lower pressure drop across filters
- ⌘ Decreased particulate accumulation by mass (not S.S.)
- ⌘ A soot cake with more surface features consisting of smaller particulate clusters (SEM)
- ⌘ Evidence of a more amorphous soot cake (Raman Spectra)

Conclusions

Methodology

- ⇒ Fracturing technique shows great potential for further analysis of soot cakes on substrates

DPF Functionality

- ⇒ Results support hypothesis of increased reactivity of B20 generated PM
- ⇒ No significant graphitization of soot cake



31



Acknowledgements

Funding for the project was provided by:

- the Earth and Environmental Technologies (ETech) Division of the Ontario Centres of Excellence, and by
- the AUTO21 Network of Centres of Excellence

Thanks to Ted Tadrous and Engine Control Systems Limited for advice, encouragement and technical support

Thanks to Don Debelak and Liqtech NA for providing the SiC substrates



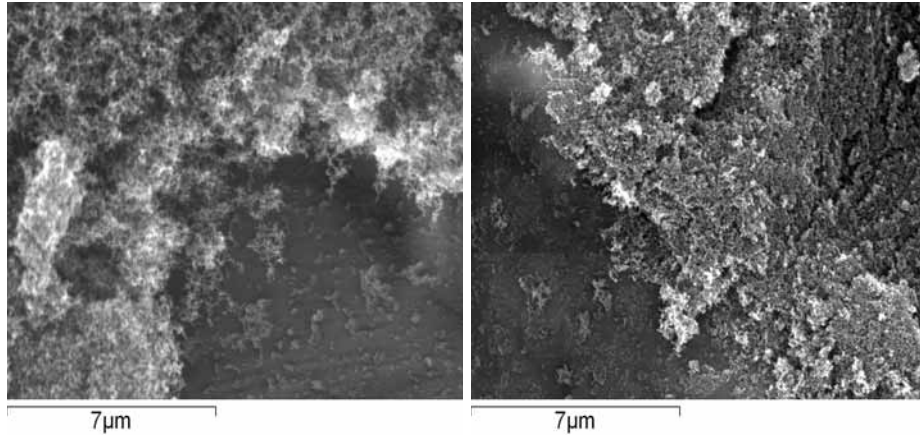
32



General Loading Trends from High Magnification SEM: Cake Density

5 Hour Loading – ULSD

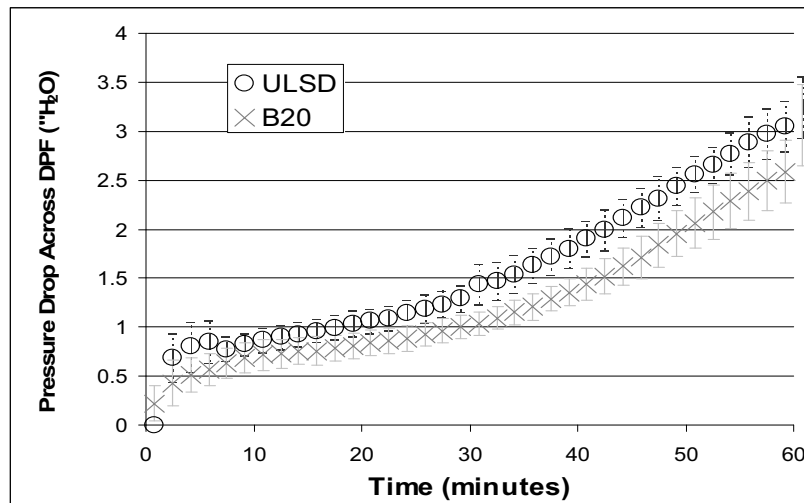
10 Hour Loading – B20



33



Fuel Effect on Trial Data: Pressure Drop Across Filters



34

